

507HT



»» Features

- Low profile 15.7 mm PCB Power Relay.
- High rating 17A 277VAC.
- Design for high temperature 105°C application.
- Available for 1C/O contact configurations ; flux-tight & sealed versions.
- High CTI 250 material or product comply with IEC 60335-1 are available.
- Complies with RoHS-Directive 2011/65/EU.

»» Type List

◆ Standard type

Terminal style	Contact form	UL Insulation system approval	Designation (provided with)		
			Flux tight	Sealed type	Sealed type washable
PCB terminal	1A (SPNO)	F	507HT-1AH-F-C	507HT-1AH-F-V	507HT-1AH-F-S
	1C (SPDT)	F	507HT-1CH-F-C	507HT-1CH-F-V	507HT-1CH-F-S

◆ High sensitivity type

PCB terminal	1A (SPNO)	F	507HTN-1AH-F-C	507HTN-1AH-F-V	507HTN-1AH-F-S
	1C (SPDT)	F	507HTN-1CH-F-C	507HTN-1CH-F-V	507HTN-1CH-F-S

»» Ordering Information

507 HT - 1C H - F - C
 1 2 3 4 5 6 7 8

- | | |
|--|---|
| 1. 507 -- Basic series designation | 5. H -- Contact material AgSnO |
| 2. HT -- High power & high temperature type | 6. F -- Class F |
| 3. Blank -- Standard type (0.53W)
N -- High sensitivity type (0.4W) | 7. C -- Flux tight
V -- Sealed type
S -- Sealed type washable |
| 4. 1A -- Single pole normally open
1C -- Single pole double throw | 8. <input type="checkbox"/> -- Coil voltage (please refer to the coil rating data for the availability) |

»» Contact Rating

Rated load (resistive)	NO: 16A 240VAC, 100K ops. 16A 240VAC 105°C, 100K ops., frequency 360 ops./hr (B10 value) 10A 240VAC 105°C, 300K ops., frequency 360 ops./hr (B10 value)
Max. switching current	17A
Max. switching voltage	277VAC
Max. switching capacity	4080VA

»» Coil Rating (DC)

◆ Standard type

Rated voltage (V)	Rated current $\pm 10\%$ at 23°C (mA)	Coil resistance $\pm 10\%$ at 23°C (Ω)	Max. continuous voltage at 105°C	Pick up voltage(Max.) at 23°C	Drop out voltage(Min.) at 23°C	Power consumption at rated voltage
3	176	17	150 % of rated voltage	75 % of rated voltage	10 % of rated voltage	approx. 0.53W
5	106	47				
6	88	68				
9	59	153				
12	44	272				
15	35	425				
18	29	611				
24	22	1,087				
36	15	2,445				
48	11	4,347				

◆ High sensitivity type (N)

Rated voltage (V)	Rated current $\pm 10\%$ at 23°C (mA)	Coil resistance $\pm 10\%$ at 23°C (Ω)	Max. continuous voltage at 105°C	Pick up voltage(Max.) at 23°C	Drop out voltage(Min.) at 23°C	Power consumption at rated voltage
3	133	22.5	150 % of rated voltage	70 % of rated voltage	10 % of rated voltage	approx. 0.40W
5	80	62				
6	67	90				
9	44	203				
12	33	360				
18	23	771				
24	17	1,440				
36	11	3,240				
48	9	5,520				
60	6.7	9,000 $\pm 15\%$				
110	3.7	30,000 $\pm 15\%$				

»» Specification

Contact material	AgSnO alloy	
Contact resistance ⁽¹⁾	100m Ω Max. (at 1A/6VDC by 4-wire resistance measurement)	
Operate time ⁽¹⁾	20ms Max.	
Release time ⁽¹⁾	10ms Max.	
Insulation resistance ⁽¹⁾	1000M Ω Min. (DC 500V)	
Dielectric strength ⁽¹⁾	Between open contact	: AC 1000V, 50/60Hz 1 min.
	Between contact and coil	: AC 5000V, 50/60Hz 1 min.
Surge voltage withstand ⁽¹⁾	Between contact and coil : 10KV (1.2X50) μ S	
Vibration resistance	Operating extremes	10~55Hz , amplitude 1.5 mm
	Damage limits	10~55Hz , amplitude 1.5 mm
Shock resistance	Operating extremes	10G
	Damage limits	100G
Life expectancy	Mechanical	30,000,000 operations (frequency 36,000 operations /hr)
Operating ambient temperature	-40~+105°C (no freezing)	
Weight	Approx. 10 g	

Note : (1) Initial value. Operate and release time excluding contact bounce.

507HT

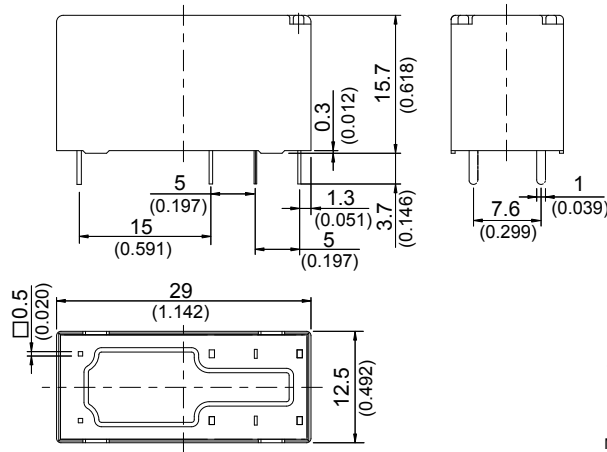
»» Safety Approval

Certified	UL / CUL	VDE
File No.	E88991	40006746

»» Safety Approval Rating

UL/CUL	VDE
17A 277VAC	17A 250VAC T105

»» Outline Dimensions

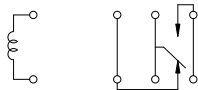


»» Wiring Diagram

BOTTOM VIEW

1C

1A



»» PC Board Layout

BOTTOM VIEW

1C

1A

